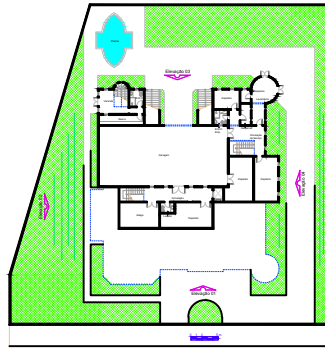
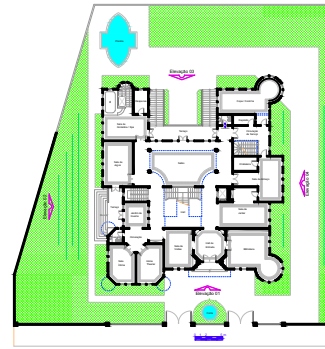


Implantação e Cobertura

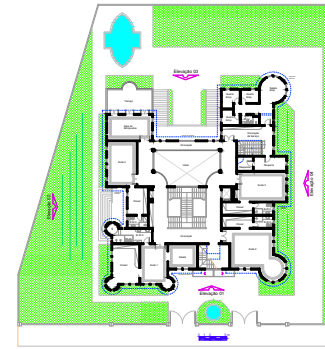


Subsolo
A = 395,06 m²

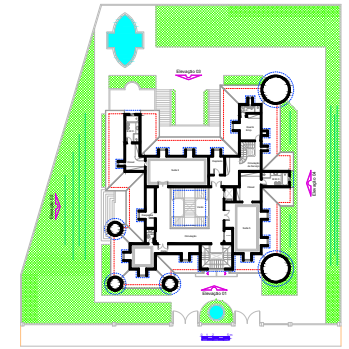
Projeto Arquitetônico - Villa Florença



Térreo
A = 540,68 m²



1º Andar
A = 479,38 m²

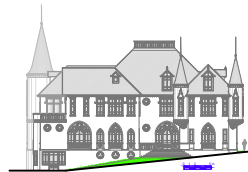


2º Andar
A = 286,99 m²

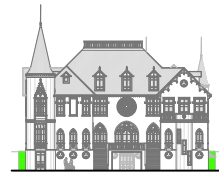
Área Total = 1702,11 m²



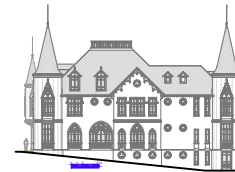
Elevação 01



Elevação 02



Elevação 03



Elevação 04